

Research Data Management Training & Support Services at ETH Zurich & EPFL

Lessons Learned, Best Practices, and the Way Forward

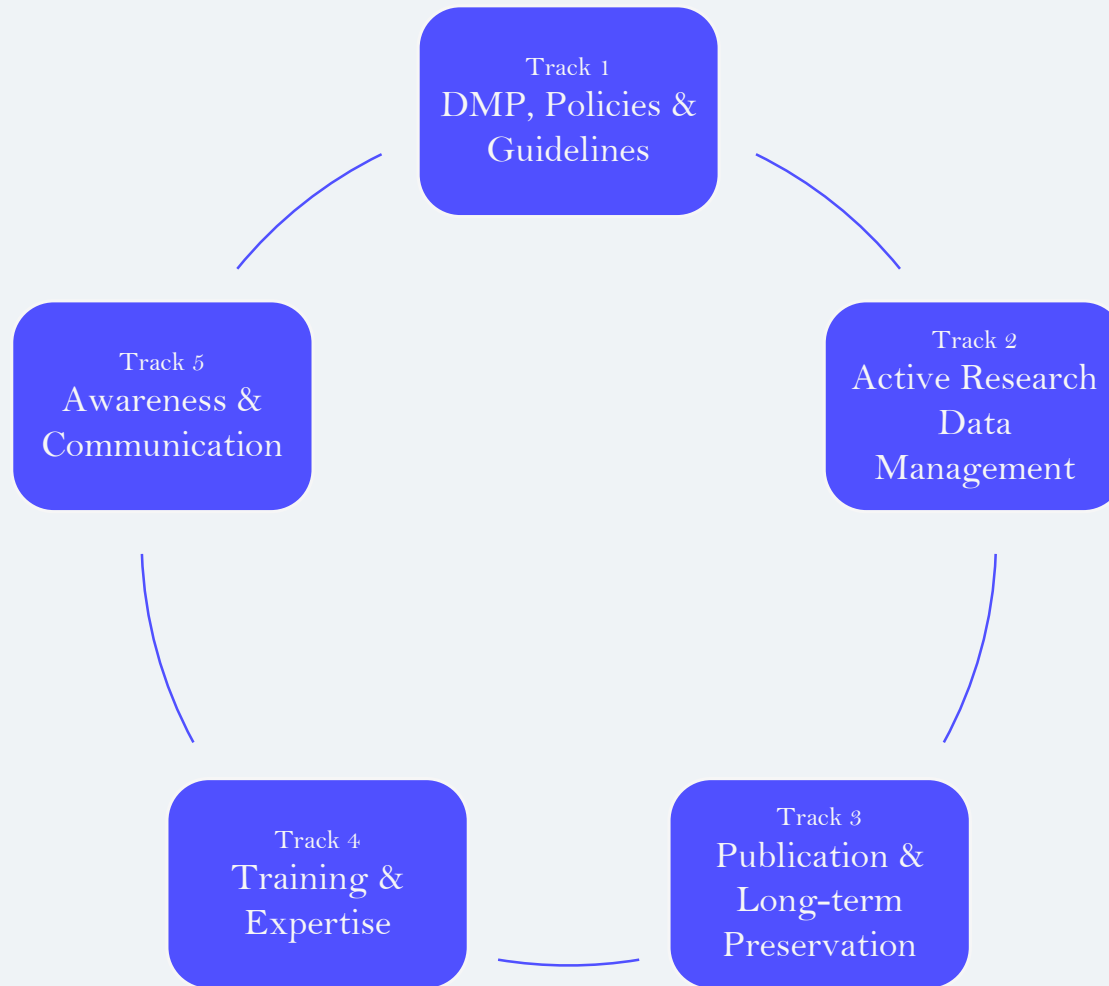
AUDE DIEUDÉ, PHD - ECOLE POLYTECHNIQUE FÉDÉRALE DE LAUSANNE (EPFL)

ANA SESARTIC, PHD - ETH ZURICH (ETHZ)



DLCM

swissuniversities





Collaboration

- Initial work by EPFL Library (Track 1 Leader) in 2015
- Data Management Checklist co-development with ETH Library
- Inspired by DMPs from many institutions and organizations all over the world
- Collaboration extended to all 8 DLCM partner institutions for input and insights
- Feedback from DLCM participants during the three track 1 workshops in 2016
- Presentation of the deliverables during the DLCM conference on November 29, 2016 taking place at the EPFL Forum located at the Rolex Learning Center



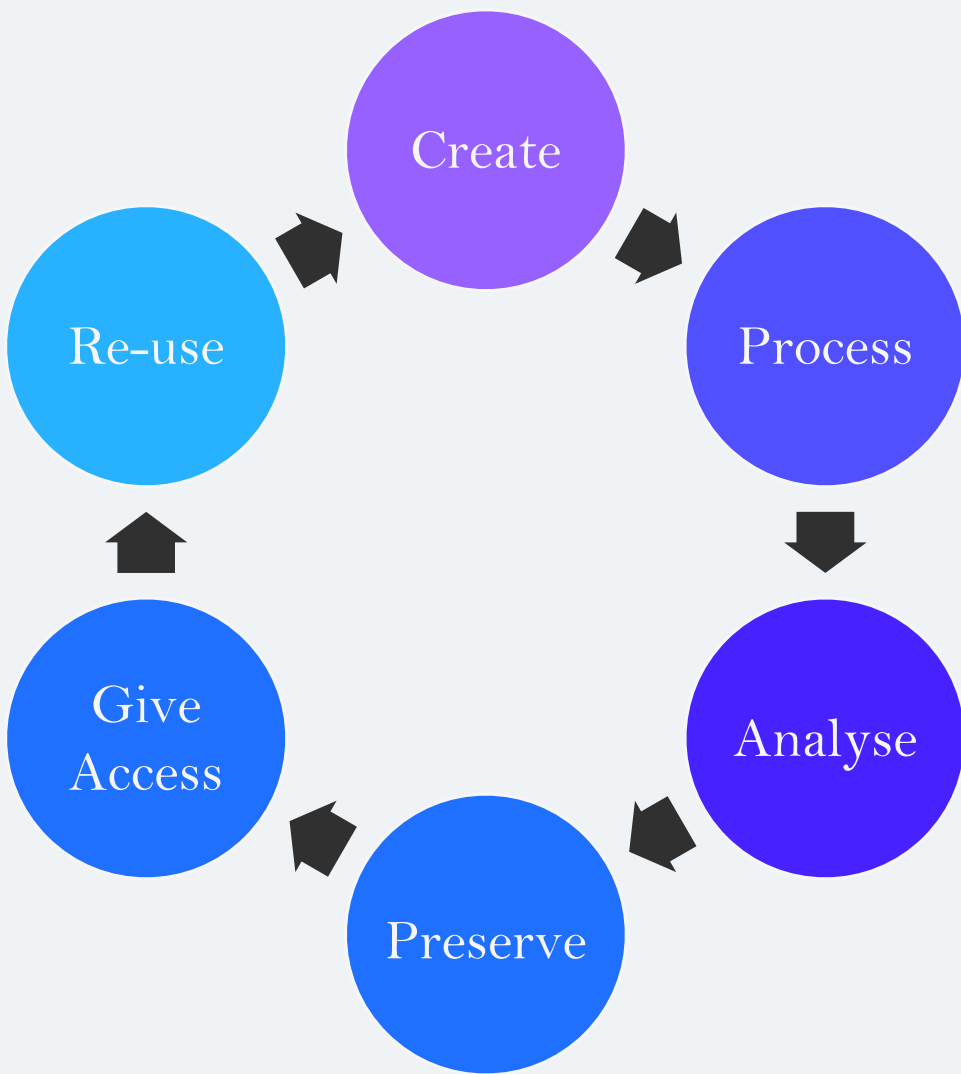


Research Data Management Training

Adapt good formats for data and metadata

- Reproduce research results
- Encourage collaboration
- Re-use

- Sharing
- Improving visibility
- Enabling citability
- Secure long-term preservation



Promoting excellence in research and scientific integrity



Research Data Management Training

At ETH Zurich

- 15 min coffee lectures
- 1.5 hour basic training
- Half-day workshop
- Tailor-made workshops and trainings on demand



At EPFL

- 4 annual one-day workshops open to all EPFL
- On-demand personalized workshop for PI
- 2 doctoral workshops on a voluntary basis
- 2 tailored EPFL Fellows compulsory trainings
- Monthly RDM Tour based on disciplines
- On-demand tailored RDM support service for research lab and their team





Research Data Management Checklist

ETH BIBLIOTHEK



Data management checklist

Managing research data throughout its lifecycle ensures its long-term value and prevents data from falling into digital obsolescence. Proper data management is a key prerequisite for effective data sharing throughout the scientific community. This, in turn, increases the visibility of scholarly work and is likely to increase citation rates.

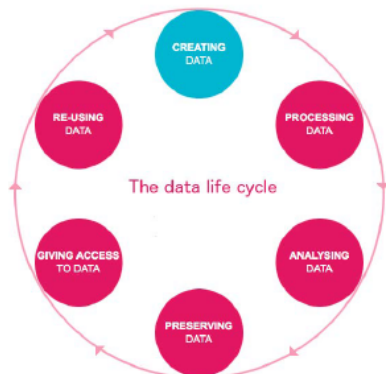
Many funding organizations prescribe the use of data management plans and insist on open access publication of the research results they funded.

Even if a funding body does not explicitly demand data management, following professional curation and preservation concepts has numerous advantages:

- (a) It greatly facilitates the reuse of research data.
- (b) As a result, this increases the impact of research results.
- (c) It saves precious research funds and ultimately natural and human resources by avoiding unnecessary duplication of work.

Today, the availability of well-managed data is part of good scientific practice and ensures the reproducibility of research results, a key requirement at the core of the research process.

The following data management checklist is based on a generalised research data lifecycle, and is flexible enough to be applied to requirements from different funding organisations.



Results

- Data Management Template and Data Management Checklist actively used for RDM training and consultation services such as the DMP personalized support service
- Positive feedback from researchers and training participants

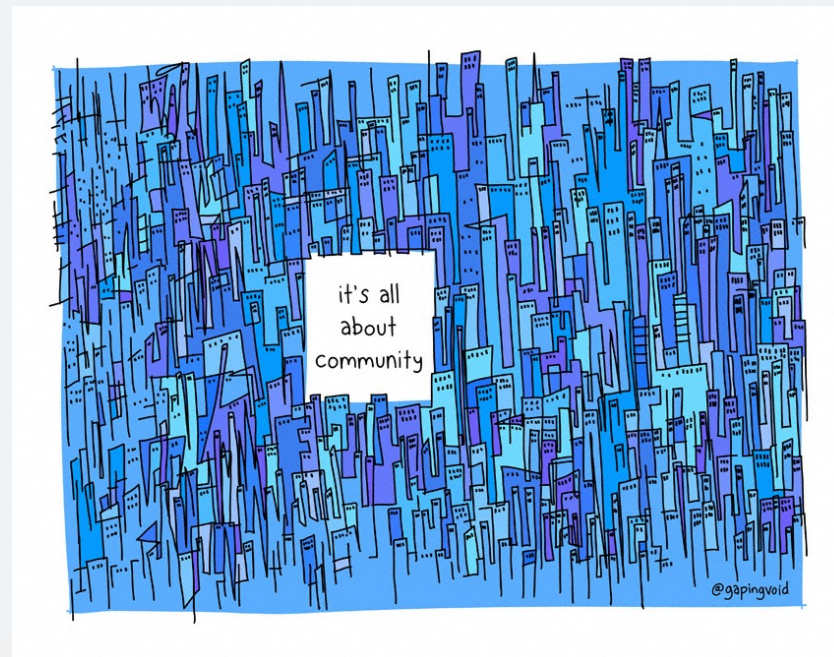
Lessons Learned

- When two (or more) major institutions collaborate together, creating strong synergies and solid bridges to focus on the same objectives: positive difference
- Less competition and ego means more constructive collaboration for the common good while focusing on the priorities at hands: fruitful results
- The end result is more than the sum of its parts.



Lessons Learned

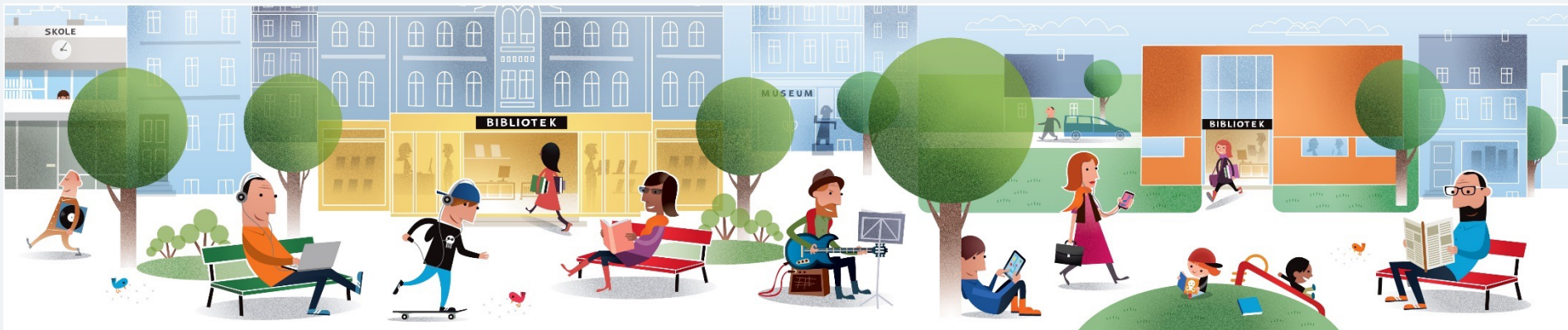
- Positive feedback from researchers
- Leading by example is important
- Personalized approach is rewarding
- RDM training leads to enhanced collaboration with scientists and better visibility for the libraries (win-win)
- Centralized and harmonized communication, sensitizing actions and quality support service are key to build momentum and trust





The Way Forward

- Harmonizing Data Management Template and Data Management Checklist for DLCM
- DMP Online / DMP Tool customized for Switzerland
- Collaboration with the DCC to do so
- Creation of a RDM MOOC and Lecture Series
- And much more: this is just the beginning



© Jorgen Stamp



Thank you & food for thought

- What do you find striking?
- What would you recommend to add, change or delete?
- Do you have similar projects or initiatives planned or ongoing in your country, institution or organization?
- We value your ideas, feedback & insight to enlighten us.

THANK YOU

Aude Dieudé, PhD

Ecole Polytechnique Fédérale de Lausanne (EPFL)

aude.dieude@epfl.ch

Ana Sesartic, PhD

ETH Zurich, ETH Library (ETHZ)

ana.sesartic@library.ethz.ch

